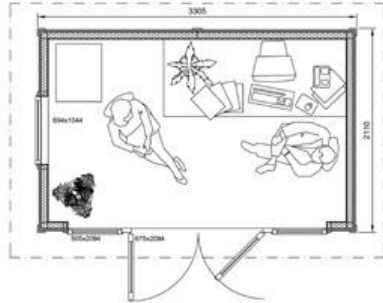


Hayden Garden Studio Range

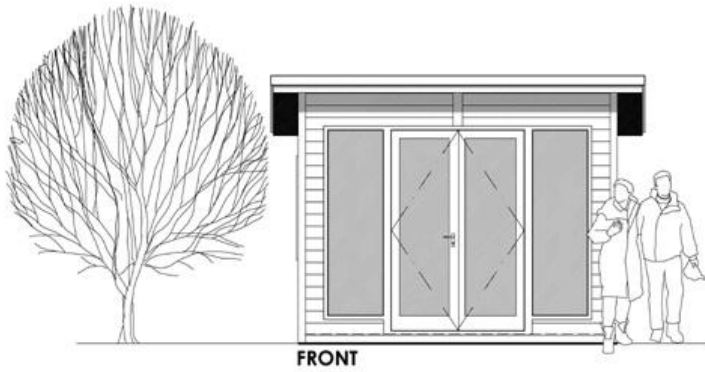
Hayden Garden Studio Deluxe



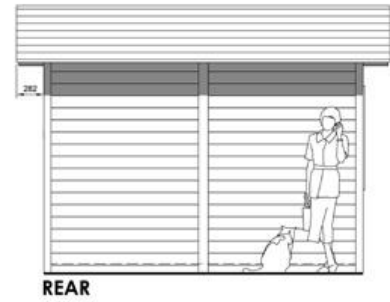
LEFT HAND SIDE



RIGHT HAND SIDE

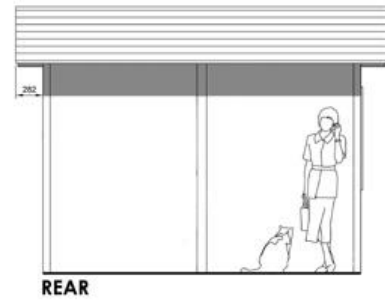
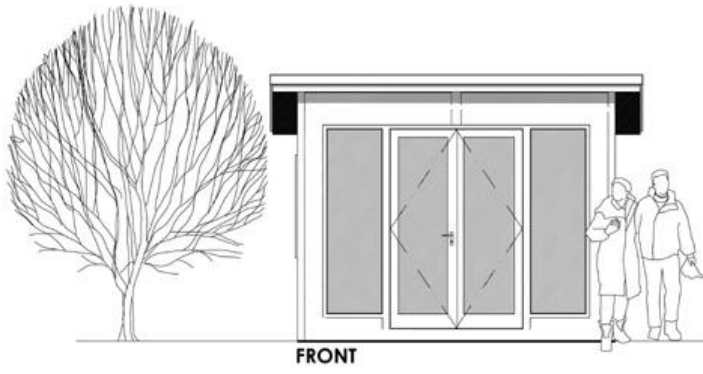
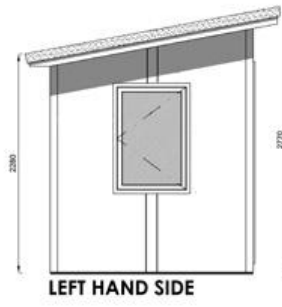
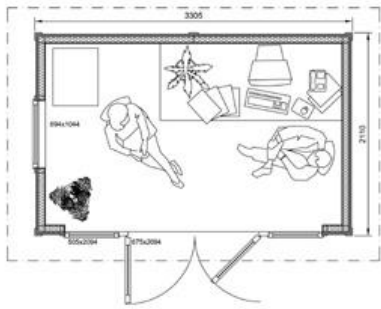


FRONT

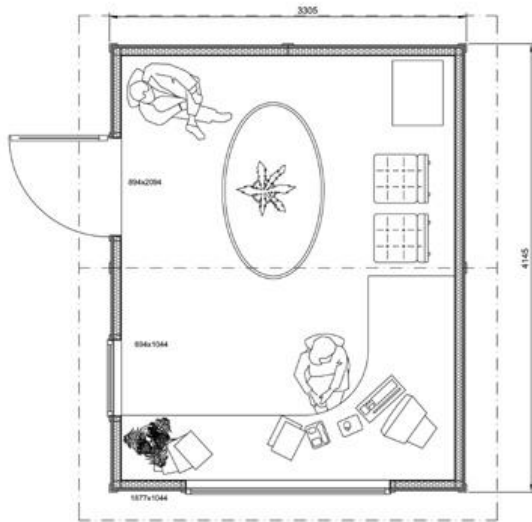


REAR

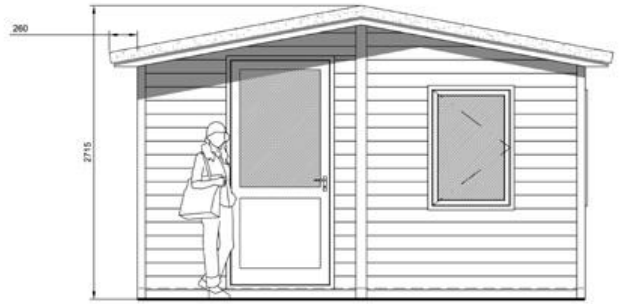
Hayden Garden Studio Classic



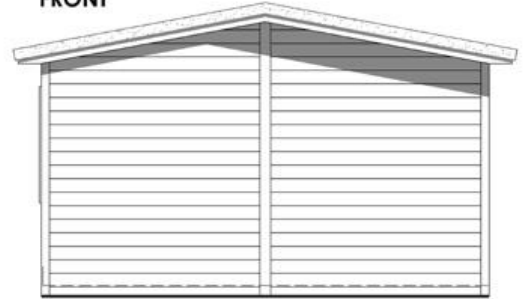
The Haydenshire



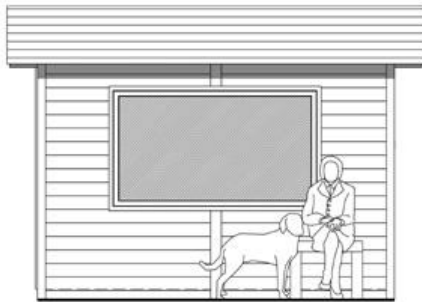
LAYOUT



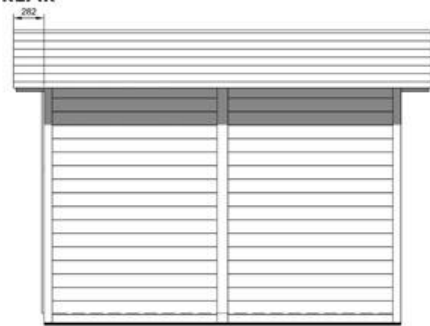
FRONT



REAR



RIGHT HAND SIDE



LEFT HAND SIDE

Construction and Insulation

- ✦ All panels fully insulated with Sheep's wool for eco friendly office and better u-value
- ✦ All timbers exposed to the elements are pressure treated
- ✦ Doors & windows with Pilkington K glass
- ✦ Walls and ceilings fitted with 8mm white melamine faced panels

Exterior Details - Deluxe

- ✦ Log lap clad with pressure treated timber, which can be colour stained to customers' precise requirements

Exterior Details - Classic

- ✦ High quality 18mm WBP plywood, protected with Aquatop base coat
- ✦ Paint: Choice of colours to suit customers' requirements

Roofing - Deluxe

- ✦ Unique metro tile roofing system with a 40 year warranty
- ✦ Inter lapping light weight tiles
- ✦ Profiled from alloy steel
- ✦ Bitumen coated with a natural stone chip finish

Roofing - Classic

- ✦ Colour coated tin roof
- ✦ Maintenance free

Building Dimensions - Hayden Garden Office and Hayden Garden Studio

- ✦ Width 3305mm
- ✦ Depth 2110mm
- ✦ Height 2280mm on the backside
- ✦ Height 2770mm on the front side

Building Dimensions - Haydenshire

- ✦ Width 4145mm front/back side
- ✦ Depth 3305mm right/left side
- ✦ Height 2715mm to top of roof
- ✦ Height 2280mm to bottom of roof

Windows and Doors – Hayden Garden Office

- ✦ Double glazed sealed units
- ✦ Wood grain effect UPVC (Light Oak)-Deluxe
- ✦ White UPVC- Classic
- ✦ Window locks
- ✦ Front window 994mm wide x 1244mm high
- ✦ Side window 694mm wide x 1044mm high
- ✦ Door 894mm wide x 2094mm high with security locks

Windows – Hayden Garden Studio

- ✦ Double glazed sealed units
- ✦ Wood grain effect UPVC (Light Oak)-Deluxe
- ✦ White UPVC-Classic
- ✦ Window locks
- ✦ Front door and screen window 2360mm wide x 2094mm high with security locks
- ✦ Side Window 694mm wide x 1044mm high

Windows and Doors - Haydenshire

- ✦ Double glazed sealed units
- ✦ Wood grain effect UPVC (Light Oak)
- ✦ Window locks
- ✦ Door 894mm wide x 2094mm high with security locks
- ✦ Front Window 694mm wide x 1044mm high
- ✦ Right hand side picture window 1877mm wide x 1044mm high

Electrics

- ✦ 3 way consumer unit
- ✦ 4 x double sockets
- ✦ 1x heater spur
- ✦ 1 x lighting track or recessed lighting
- ✦ 1 x outside light

Accessories and Extras

Accessories can be supplied at small extra cost

- ✦ Carpets or laminate flooring
- ✦ Venetian blinds
- ✦ Heater
- ✦ Office furniture
- ✦ Decking area

Bespoke Orders

We are able to construct bespoke office units to customers' own designs and specifications and positively encourage customers to discuss their ideas with us.

Planning

These buildings do not require planning permission. If in doubt the customer should refer to their local planning office

Site Visits

If you would like to know more, please give us a call to discuss the finer details of your inquiry. We would also be happy to arrange a meeting on site, if required.

Garden Offices and Garden Studios - Self Build Flat Packs

The Hayden Deluxe and Classic

The Hayden Garden Office and Hayden Garden Studio are available as self build flat packs. Once assembled you have a Garden Office or Garden Studio that is a fraction of the price of a pre-assembled unit.

Specifications

The Hayden self build flat pack has the same specifications as the pre-built unit. For details of the specification please refer to the pre-built Hayden Garden Office and Hayden Garden Studio.

Self Build Procedure

The Hayden can be assembled by anyone with competent DIY skills. It arrives as pre-constructed panels that are easily bolted and screwed together by the following steps:

- ✦ Bolt all panels together
- ✦ Fit external cladding and trims
- ✦ Fit roof tiles
- ✦ Fit door and windows
- ✦ Fit installation and internal trim
- ✦ Stain or paint exterior to your own required colour

Electrics

The Hayden self build flat pack does not include electrics. The office can be wired during assembly or after it has been assembled.

Delivery

Delivery of a self build flat pack within Cumbria is free. The cost of delivering a self build flat pack outside Cumbria is dependent on post code. Please see our [delivery price guide](#) for details.